



## Seismic Viscous Dampers: A Cost-Effective Solution with Enhanced Performance for Retrofit and New Construction

**H. Kit Miyamoto 1**

Miyamoto International  
1450 Halyard Drive, West Sacramento, CA, USA  
kmiyamoto@miyamotointernational.com

**Amir SJ Gilani 2**

Miyamoto International  
1450 Halyard Drive, West Sacramento, CA, USA  
agilani@miyamotointernational.com

### ABSTRACT

The application of seismic protection devices such as dampers has fundamentally altered the landscape of earthquake engineering and design. Structures designed and built without such devices typically use a code-prescribed design that implies extensive structural damage, loss of operation, and likely replacement at design-level events. By contrast, seismic design incorporating earthquake protection devices leads to optimal design and combination of best engineering practice and minimal cost. These devices are robust, cost-effective, and have a proven exceptional performance record in past earthquakes. In most cases, initial cost of their utilization is at least in part neutralized by reduction in cost of other structural members. The long-term performance is the key parameter used for evaluation. A code-based design structure, likely would require major repair or replacement after a design level earthquake. In contrast, structures properly designed with these devices will likely only require minimum post-earthquake inspection and can be fully operational within hours of a seismic event. Such performance is not only cost effective; it also reduces the need for use of natural resources by eliminating post earthquake repair or reconstruction. Example design of code-based and high performance design are presented illustrating the superior performance of buildings with seismic protective devices.

**Keywords:** *Energy dissipation, steel moment frame, damper limit state, fragility function, collapse probability*

### 1 INTRODUCTION

Steel SMFs are one of the preferred options for seismic design in regions of high seismicity. The Northridge earthquake of 1994 demonstrated that the standard assumptions and construction detail (complete penetration welding of beam flanges to column flanges and bolted/welded shear tab) exhibited sudden and brittle failure. To address this issue, extensive testing and evaluations

were conducted and prequalified connections have been developed. Reduced beam section (RBS or dog-bone); see Figure 1, is a connection that is qualified for any size member. By reducing the beam flexural capacity, nonlinearity is concentrated in the reduced region and away from the potentially vulnerable beam-to-column connection.

The combination of supplementary energy dissipation devices, dampers, and steel SMRFs presents an attractive design option. The result is a highly damped, low-frequency building that limits seismic demand on structural and nonstructural components. Fluid viscous dampers (FVD)s are an ideal option due to their high damping because they are velocity dependent, and hence, do not significantly increase demand on foundations or columns. FVDs were originally developed for the defence and aerospace industries. They are activated by the transfer of incompressible silicone fluids between chambers at opposite ends of the unit through orifices; see Figure 2. During seismic events, the devices become active and the seismic input energy is converted to heat and is thus dissipated.

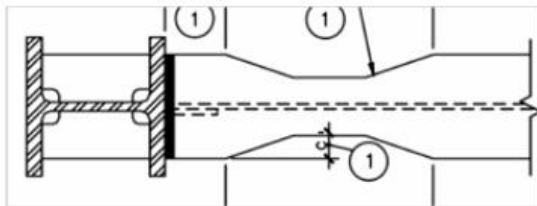


Figure 1. Details of RBS

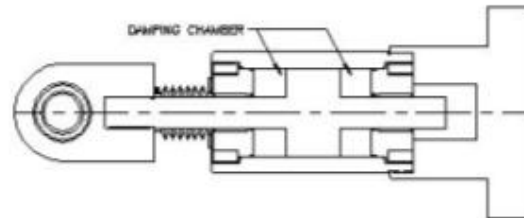


Figure 2. Schematic of FVD

### 1.1 Application to steel SMF buildings

In the past several years, the authors have applied the design methodology discussed here for a number of steel SMRF buildings. Sample structures are listed in Table 1. For a more detailed survey of other steel buildings with dampers, the reader is referred to [6].

Table 1. Sample of newly designed/constructed steel SMRF with dampers

Structure	Stories	Area, m <sup>2</sup>
Town Square	4	8,000
Sutter Gold, Modesto	5	13,000
CSU Sacramento AIRC Building	4	10,000
Vacaville Police Station	2	4,000
Ziggurat building	11	30,000

The additional cost of the dampers is typically offset by the savings in steel tonnage and foundation concrete volume. Hence, the conventionally designed and the damped buildings have similar initial costs. Sample data is presented in Table 2.

Table 2. Cost comparison for typical supplementary damped steel SMRF

Item	Conventional	Damped	Differential cost
Moment Frames	274 Ton	223 Ton	- \$150,000
Grade beams	Reinforced concrete	--	- \$200,000
Dampers	--	\$200,000	+ \$200,000
Net			-\$150,000

## 2 US CASE STUDY

### 2.1 US code provisions

Provisions of ASCE/SEI 7-10 [1] were used to design a new steel framed multi-story building in the Los Angeles area. The steel members were sized using conventional code design procedures. FVDs were sized to control the story drifts. The dampers were placed only at the ground floor with pinned column bases where the maximum velocity is expected to occur. A parallel design was carried out using the conventional design methodology. This model was designed following the conventional code procedure for both strength and drift.

The four-story commercial building is 18.5 m tall and has a total floor space of 8,000 m<sup>2</sup>. Architectural rendering of the building is presented in Figure 3. Computer program SAP was used to prepare three-dimensional mathematical models of the damped and conventional designs. For the damped model, the bases of all columns were modeled as pinned. For conventional design model, the fixity, provided by the grade beams, was assumed at the base of all columns. Figure 4 depicts the mathematical model of the building. Sixteen nonlinear FVDs were used to control story drifts at the first floor. The seismic mass of the building was approximately 9 MN.



Figure 3. Architectural rendition

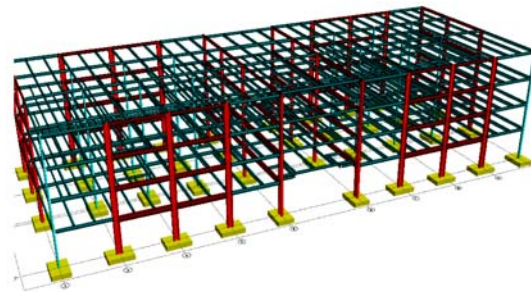


Figure 4. Mathematical model

Two levels of seismic hazard were investigated in design and include the maximum considered earthquake (MCE) with a 2,500-year recurrence interval, and the design basis earthquake (DBE) with a return period of 475 years.. The response spectra for the two sites are shown in Figure 5. Spectrum-compatible records were synthesized using seeds from past earthquake records and having response spectra closely matching the target. The records have a typical duration of 40 seconds. Two performance levels were used in evaluation of building, life safety (LS) at DBE and collapse prevention (CP) at MCE.

Nonlinear response history analysis was performed to evaluate performance. The models were first preloaded with gravity load combinations and then subjected to the three pairs of accelerations at the DBE level and three pairs at the MCE level. The components of the ground motion were aligned with building principal axes. Maximum response quantities, such as, building floor displacement and accelerations, story shears, FVD forces, and member stresses, were extracted. The extreme values from all analyses were then used for evaluation.

### 2.2 Analysis results

The maximum computed story drift was approximately 1.4% for both damped and conventional structures, see Figure 6. Base fixity and larger member sizes control drift for the conventional model. FDDs provide such control for the damped model. The damped model has smaller base shear (Figure 7) and floor accelerations (Figure 8) because it has a larger period and damping ratio. Therefore, the application of the FVDs seismically protects both the structural and nonstructural components.

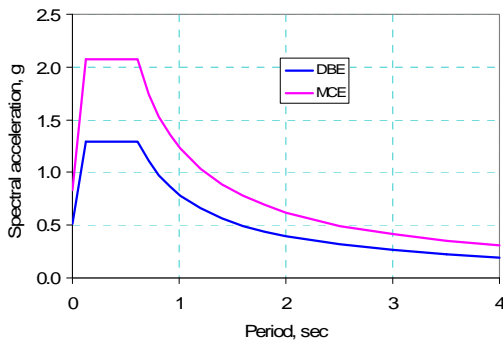


Figure 5. Seismic demand

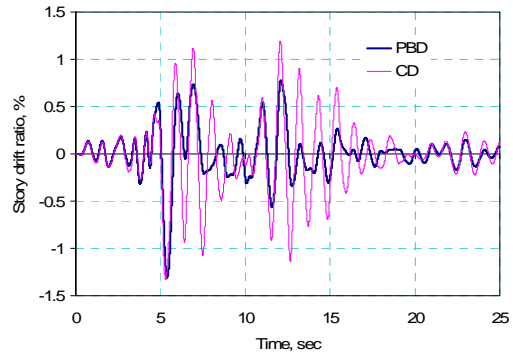


Figure 6. Story drifts

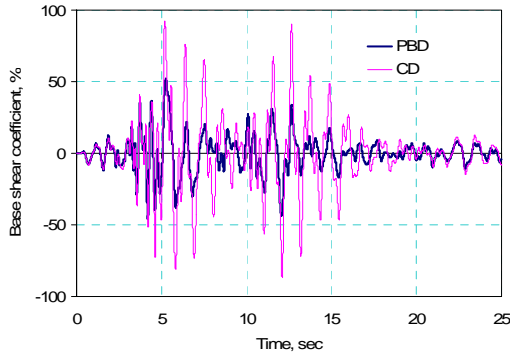


Figure 7. Base shear coefficient

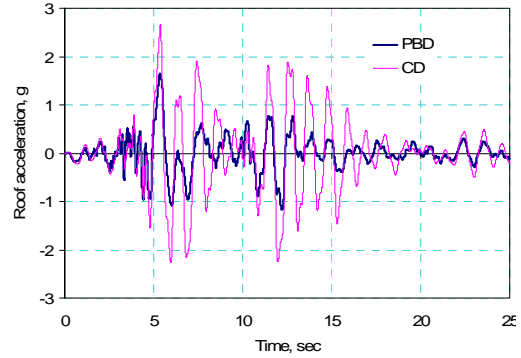
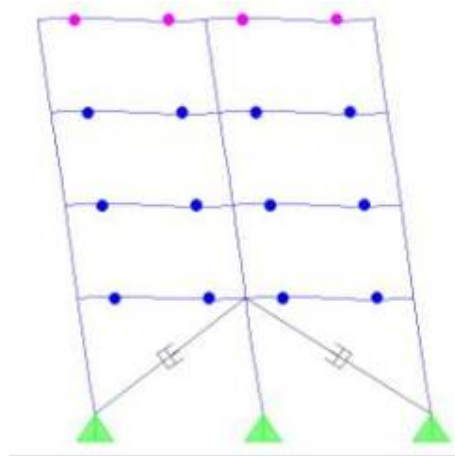
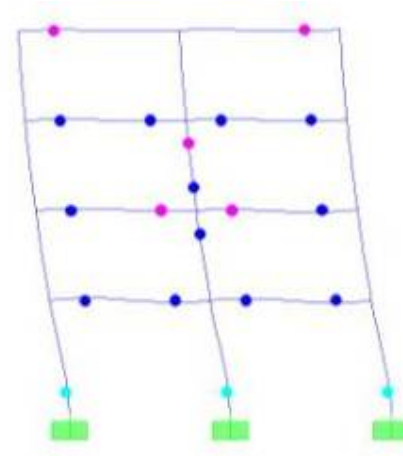


Figure 8. Roof accelerations



a. Model with dampers



b. Conventional design

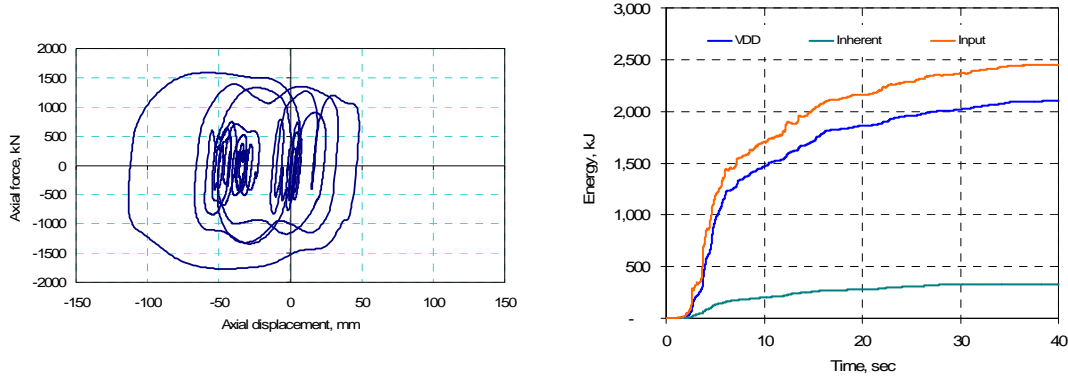
Figure 9. MCE plastic hinge rotations

Figure 9 shows the snap shot of the damped and conventional models at maximum deformation for the MCE event. Both models meet their performance goal of collapse prevention for this event. However, the damped model meets the higher LS performance goal. Furthermore, the columns of the PBD model remain elastic and, as listed in Table 3, the plastic rotations are smaller for the damped model.

Figure 10 presents the damper hysteresis loop and the components of seismic energy computed from analysis. In the absence of dampers, yielding in ductile beam members would substitute for such energy dissipation.

Table 3. Maximum MCE plastic hinge rotations, % radian

	Conventional	Damped
Beam	1.7	1.3
Column	2.6	0



FVD hysteretic behaviour

Components of seismic energy for elastic structure

Figure 10. Energy dissipated by dampers

### 3 COST-BENEFIT ANALYSIS

The damped structure has superior long-term performance and lower maintenance costs. Following a design earthquake, the conventional building should provide life safety, but will sustain significant damage because of significant ductile yielding of the gravity carrying elements and higher accelerations.

The long-term performance of damped and conventional buildings is qualitatively illustrated in Figure 11. The buildings have similar performances at construction time. Sometime later, a seismic event occurs. This reduces the quality level of the buildings. The degradation for conventional building is greater, resulting in larger repair cost and downtime. It is anticipated that building would sustain significant structural and nonstructural damage. For the damped building, the damage level is lower. This results in a lower repair cost, less loss of occupancy, shortened business interruptions (BI), and a reduced amount of nonstructural damage. This also translates to shorter repair time. Hence, the damped building will more readily retain its pre-earthquake performance level.

The long-term relative efficacy of the seismic design is inversely proportional to the areas under the curves of Figure 11. This area approximates lost time or repair cost times loss of quality. In other words, the damped structure is more robust and has a higher seismic resiliency.

### 4 CONFIDENCE LEVEL CALCULATIONS

For the damped building, the column plastic hinge rotations are zero. Using the FEMA 350 [2] methodology, nominal column yield rotation, and FEMA 350 default values for variability coefficient, the approximate confidence levels of Figure 12 are computed for the two design approaches.

The figure indicates that for the damped design there is a very high probability that the performance goals would be reached. It is worth remembering that the results of Figure 12 are for an idealized dampened structure. Three factors contribute to differentiate between the idealized model assumed here and the real-life behaviour. 1) Not 100% of dampers will meet a performance goal. For a sample of  $n$  dampers laboratory tested to a target performance, there is a probability  $p_1$  that one damper will not meet its performance goal. 2) When a number of dampers all meeting their

performance goals are installed in a building, the introduction of the braced connector and the damper connection hardware introduce performance reduction variables to these units. Thus, there is a probability  $p_2$  that the idealized installed dampers will not meet their performance goal. 3) Finally, the dampers are designed and sized for a specified force and displacement capacity derived from analysis at a performance level. When the units are subjected to motions larger than anticipated from analysis, there is a probability  $p_3$  that the units would experience thermal effects greater than design or reach their stroke or force capacity and thus become ineffective. As such, the realistic confidence level attainable for the damped building is somewhat lower than the idealized case and is shown by the dashed line in Figure 12.

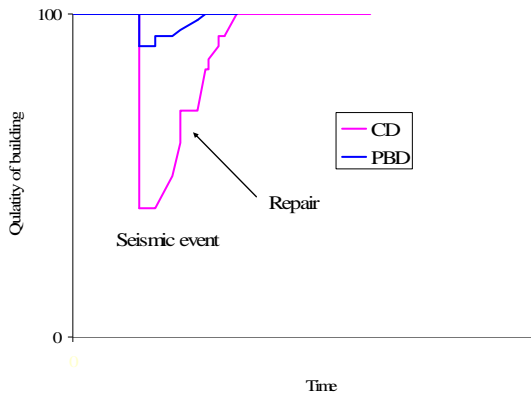


Figure 11. Qualitative resiliency curves

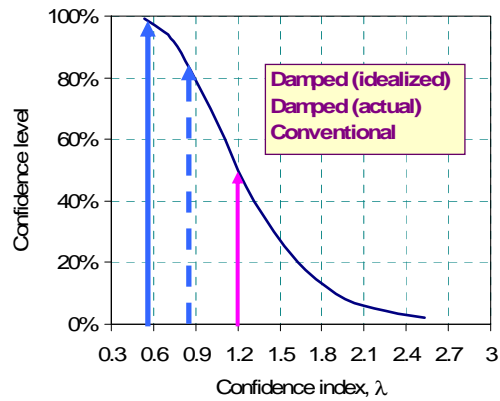


Figure 12. Sample confidence levels

## 5 VISCOUS DAMPER LIMIT STATES

In most applications, the dampers are modeled as simple Maxwell model of Figure 13. The viscous damper itself is modeled as a dashpot in series with the elastic driver brace member. Such model is adequate for most design applications, but is not sufficiently refined for collapse evaluation. In particular, force and displacement limit states are unaccounted. Although dampers are comprised of many parts, the limit states are governed by a few elements. The dampers bottoms out, once the piston motion reaches its available stroke. This is the stroke limit and results in transition from viscous damper to a steel brace with stiffness equal to that of the cylinder wall. The force limit states in compression and tension are governed by the buckling capacity of the driver brace and the tensile capacity of the piston rod, respectively. Figure 14 presents the proposed limit state model for viscous dampers. This model is developed to incorporate the pertinent limit states and consists of five components.

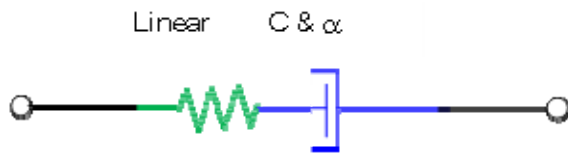


Figure 13. Maxwell model

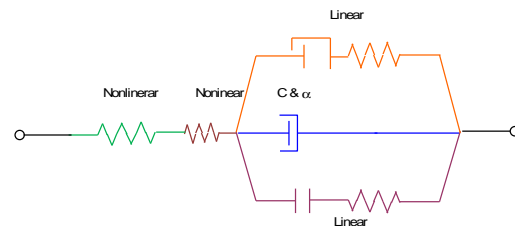


Figure 14. Limit state model

For analysis, once the stroke limit is reached, the damper becomes numerically equivalent to a steel brace. Upon unloading, this process is reversed. When the force limit is reached, the entire damper is ineffective and thus permanently removed, even after unloading. The sudden transmissions between viscous damper, steel brace, and no members can impart large impact forces on the structure. At the instant that the gap closes, the damper force is zero. However, as loading is

continued, the unit displacement can increase due to deformation in the cylinder wall and thus velocity is non-zero. At the large peaks, the damper force, which is algebraic sum of the force in the dashpot and the cylinder wall, can be smaller than the force resisted by the wall cylinders.

## 6 ANALYSIS OF DAMPED STRUCTURES SUBJECT TO LARGE EARTHQUAKES

### 6.1 Background

The input histories used in analysis were based on the two components of the 22 far-field NGA PEER [5] records. These 44 records have been identified by FEMA P695 [3] for collapse evaluation analysis. The selected 22 records correspond to a relatively large sample of strong recorded motions that are consistent with the code [1] and are structure-type and site-hazard independent. The design MCE spectrum is shown as the thick solid line in the figure. For analysis, the records were normalized to remove the record-to-record variation in intensity.

Program OpenSees [4] was used to conduct the nonlinear incremental dynamic analyses or IDA [7] described in this paper. Pertinent model properties are listed here. To illustrate the concepts described in this paper, design and analysis of a of 5-story archetypes (see Figure 15) with viscous damping was conducted. The basic geometry and distribution of dampers for these models are summarized in Table 4.

Table 4. Archetypes

Archetype	Stories	Column base	Drift Ratio	Damper FS
B1	5	Fixed	2.0%	1.0
B2	5	Fixed	1.0%	1.3

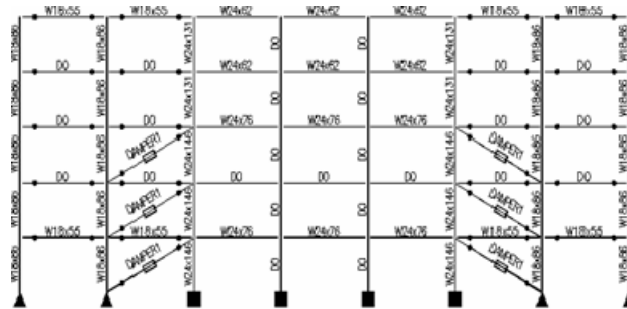
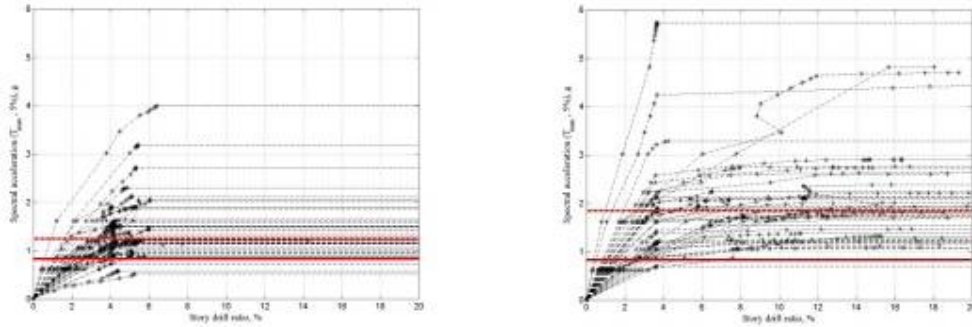


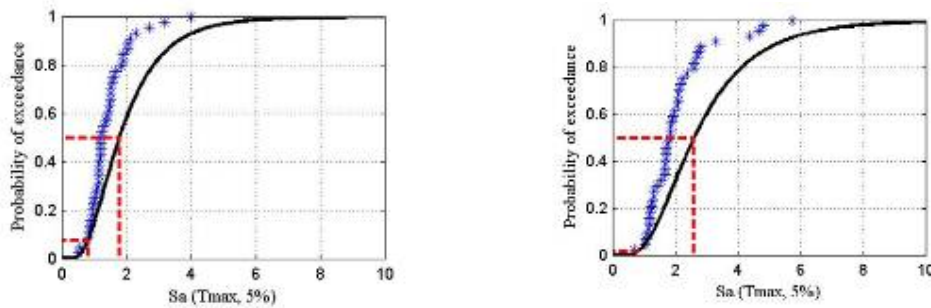
Figure 15. Five-story archetype B1

### 6.2 Analysis results

The analysis results for the five-story archetypes are presented in Figure 16. The computed system ductility was 8.0 and resulted in a SSF of 1.34. For the IDA plots, the solid and dashed red lines correspond to the MCE (SMT) and the median collapse capacity (SCT), respectively. Note that the addition of small damper factor of safety significantly increases collapse margin. For the fragility plots, the 44 collapse data are statistically organized and a lognormal curve is fitted to the data (dashed lines in the figures). The plot was then rotated to correspond to a total uncertainty of 0.55 (solid line) per FEMA P695. Finally the curve was shifted to account for the effect of the SSF (dark solid lines in the figures). The probability of collapse at MCE intensity was then computed. The probability of collapse at MCE level was reduced by a factor of approximately 4 when an additional damper factor of safety of 30% is included. Table 5 summarizes the results. The collapse margin ratio (CMR) is defined as the ratio of SCT and SMT. The adjusted collapse margin ratio (ACMR) is then computed as the product of SSF and CMR. FEMA P695 specifies a minimum ACMR of 1.59 for acceptable performance. Both archetypes have significantly larger collapse margins and therefore pass.



IDA curves



Fragility plots

Figure 16. Analysis results

Table 5. Damper fragility data

Archetype	SCT	SMT	CMR	SSF	ACMR	P/F	Response probability at MCE	
							collapse	Damper capacity
B1	1.24	0.82	1.51	1.34	2.20	Pass	8.0%	22%
B2	1.81	0.82	2.25	1.34	3.10	Pass	2.0%	10%

## 7 CONCLUSIONS

New steel buildings were designed using performance based engineering (PBE) and provisions of ASCE 7. SMRFs were used to provide strength; dampers were used to control story drifts. PBE design using dampers is superior to the conventional design. The demand on both structural and nonstructural components is reduced. To date, a model of viscous dampers with limit states has been formulated that includes damper limit states. Current research using IDA and limit states of dampers provides a more realistic assessment of the performance of moment frames with dampers. All the archetypes had significant margin against collapse and thus had satisfactory performance. When a damper factor of safety is included in design, additional protection for the structures and dampers is provided. As one of the research deliverables, pertinent information will be provided for the designers to assist in seismic design using this approach

## 8 REFERENCES

- [1] ASCE (2010), "ASCE 7-10: Minimum design load for buildings and other structures," American Society of Civil Engineers, Reston, VA
- [2] FEMA (2000), FEMA 350: Recommended Seismic Design Criteria for New Steel Moment Frame Buildings, Federal Emergency Management Agency, Washington DC.



- [3] NEHRP (2009), “ATC 63, FEMA P695: Quantification of Building Seismic Performance Factors,” Federal Emergency Management Agency, Washington, D.C.
- [4] PEER (2009a), Open System for Earthquake Engineering Simulation (OpenSees), McKenna, F., Fenves, G., et al, Pacific Earthquake Engineering Research center, University of California, Berkeley. Berkeley, CA.
- [5] PEER (2009b), PEER NGA, Records Pacific Earthquake Engineering Research center, University of California, Berkeley. Berkeley, CA.
- [6] Taylor (2012), Personal Communications
- [7] Vamvatsikos, D. and Cornell, A.C. (2004) Applied Incremental Dynamic Analysis, Earthquake Spectra, Volume 20, No. 2, pages 523–553, Earthquake Engineering Research Institute, Oakland, CA